

## **STINA user guidelines**

---

### **Installation of extra programs for the spreadsheet solution**

#### **Introduction**

The user guidelines are aimed at the technicians in enterprises who are to install the necessary extra programs. For STINA spreadsheets issued as from September 2005 it is no longer necessary to install all extra programs to use the spreadsheet, but certain functions will not be available unless all extra programs are installed (cf. "User guidelines for spreadsheet solution").

We recommend that you start by copying the spreadsheet from the CD-ROM to the PC where it is to be used. Next, run the menu item "Danmarks Nationalbank", "Setup" to see which programs are already installed on the PC. Then you can determine which extra programs you want to instal.

The guidelines describe the programs and for each program there is an installation guide.

1. (VB 6.0 Runtime, only if the enterprise uses Windows 98).
2. Microsoft Soap Toolkit, version 2.0
3. Microsoft MS XML, version 4.0
4. Microsoft Scripting Host, version 5.6

Apart from the programs, the operating system used to transmit the report must support 128-bit encryption for SSL. Also SSL requires opening of Port 443 in the enterprise firewall.

For Windows versions older than Windows 2000 the support of 128-bit encryption follows with the installation of Internet Explorer 5.5 or later.

For Windows 2000 128-bit encryption requires Service Pack 2 or newer.

For Windows XP or Windows 2003 128-bit encryption is the default.

The spreadsheet is dependant on the language of the Microsoft Office installation. *Users of English versions of Microsoft Office must therefore use an English version of the spreadsheet.*

The spreadsheet has been tested on the following platforms:

- ◆ Windows 2000 SP4, Danish version  
Office 2000 SR-1, Danish version
- ◆ Windows 2000 SP4, Danish version  
Office 2003, Danish version

- ◆ Windows 2000 SP4, English version  
Office 2003, English version
- ◆ Windows XP, English version  
Office XP, English version
- ◆ Windows XP, English version  
Office 2003, English version

Other versions or combinations of versions have not been tested. Danmarks Nationalbank cannot guarantee that the spreadsheet will function on these versions or combinations of versions, and cannot support these installations. If your enterprise has one of these platforms we recommend that you use STINA Online instead.

If the enterprise has a proxy server, we have furthermore observed difficulties for the spreadsheet to transmit the report to Danmarks Nationalbank. If that is the case you can chose either spreadsheet with the transmission method Manual Upload or STINA Online instead (cf. "User guidelines for Manual Upload" and "User guidelines for STINA Online").

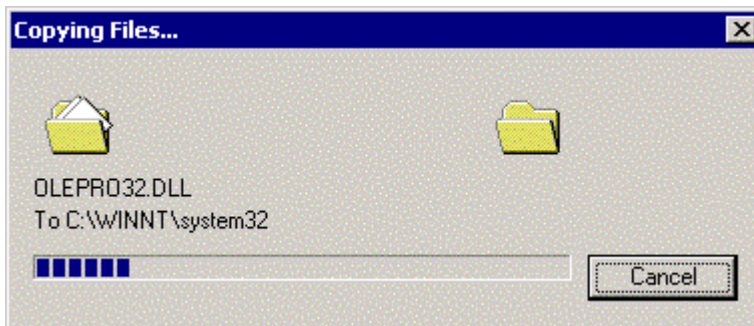
## 1. VB 6.0 Runtime

This program is necessary on computers with the Windows 98 operating system. VB 6.0 Runtime adds functionality to Windows 98 that has become standard in later versions of Windows. Without VB 6.0 Runtime the Soap Toolkit cannot be installed correctly.

VB 6.0 Runtime is found on the CD-ROM in the path xxx\VB 6.0 Runtime or can be downloaded from Danmarks Nationalbank's website [www.nationalbanken.dk](http://www.nationalbanken.dk) under Rules > Statistics – Electronic reporting (STINA) > STINA ver. 2.0.

### Installation

- ◆ Start the program vbrun60sp6.exe from the CD-ROM as mentioned above.



- ◆ VB 6.0 Runtime is now being installed.
- ◆ Restart Windows 98 after the installation.

## 2. Soap Toolkit 2.0

Microsoft Soap Toolkit 2.0 is used to communicate with STINA. Without this addition to Windows it is not possible to submit a report to STINA.

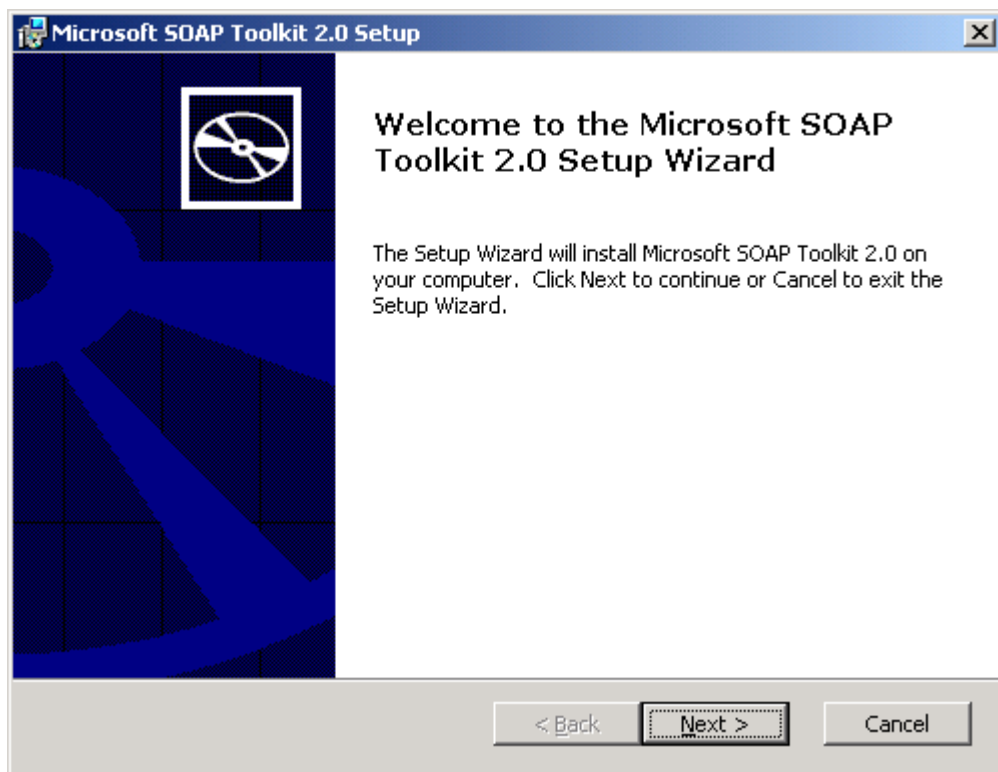
Soap Toolkit 2.0 is found on the CD-ROM in the path xxx\Soap Toolkit 2.0 or can be downloaded from Danmarks Nationalbank's website [www.nationalbanken.dk](http://www.nationalbanken.dk) under Rules > Statistics – Electronic reporting (STINA) > STINA ver. 2.0.

### Installation

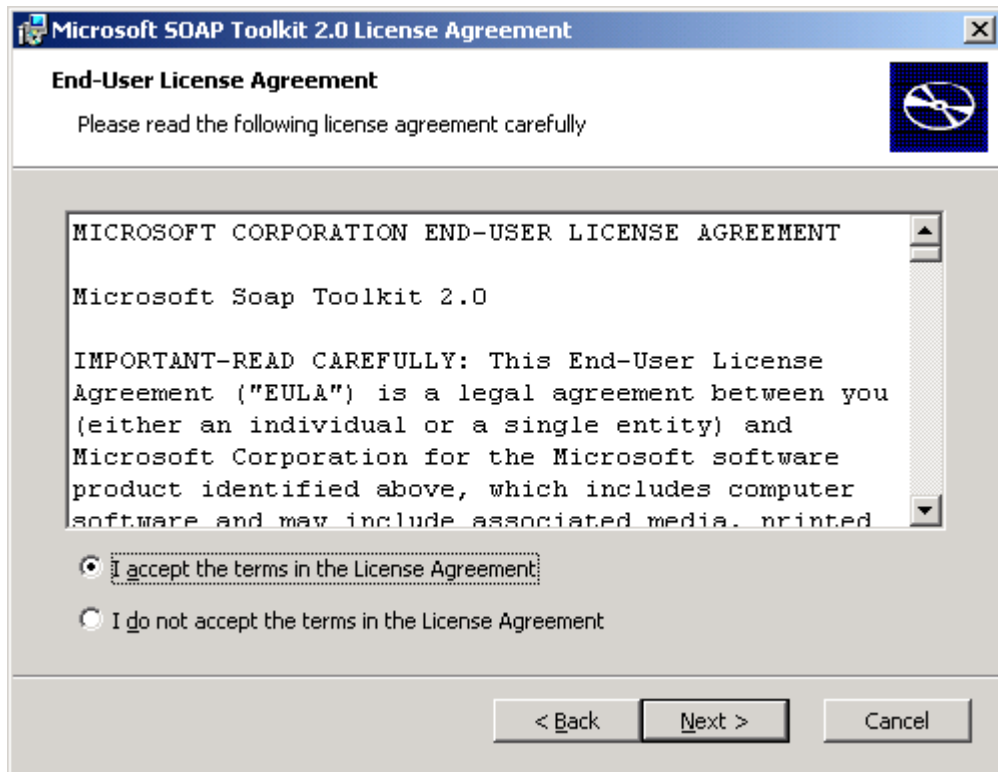
- ◆ Start the program SoapToolkit20.exe from the CD-ROM as mentioned above.



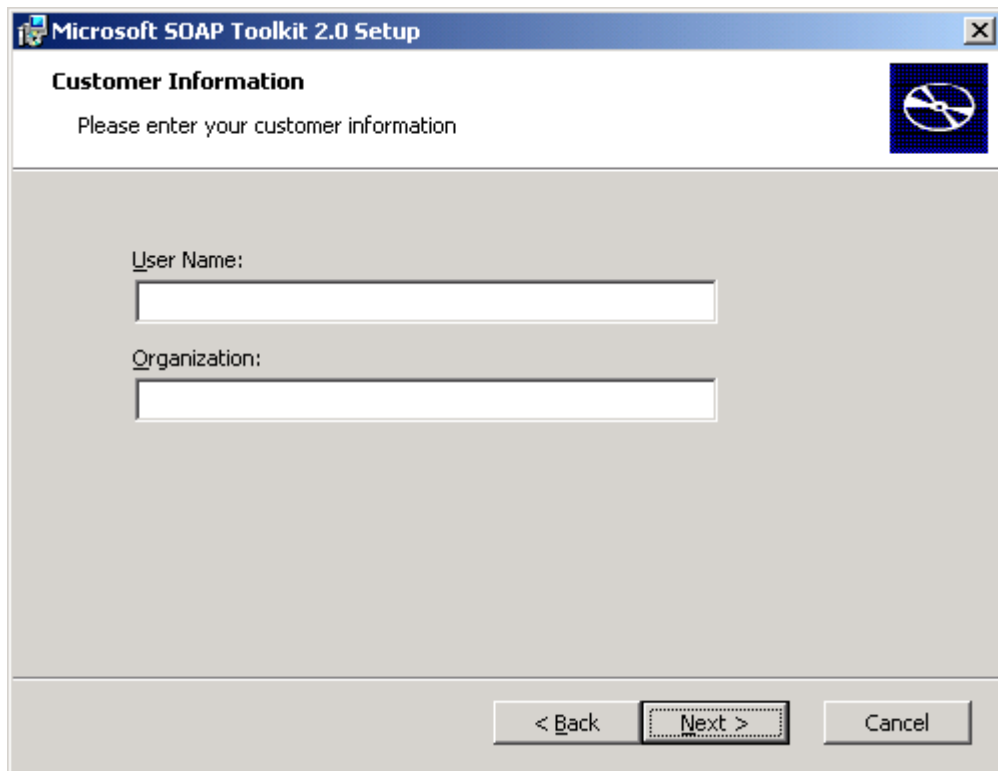
- ◆ Click "Yes" to install.



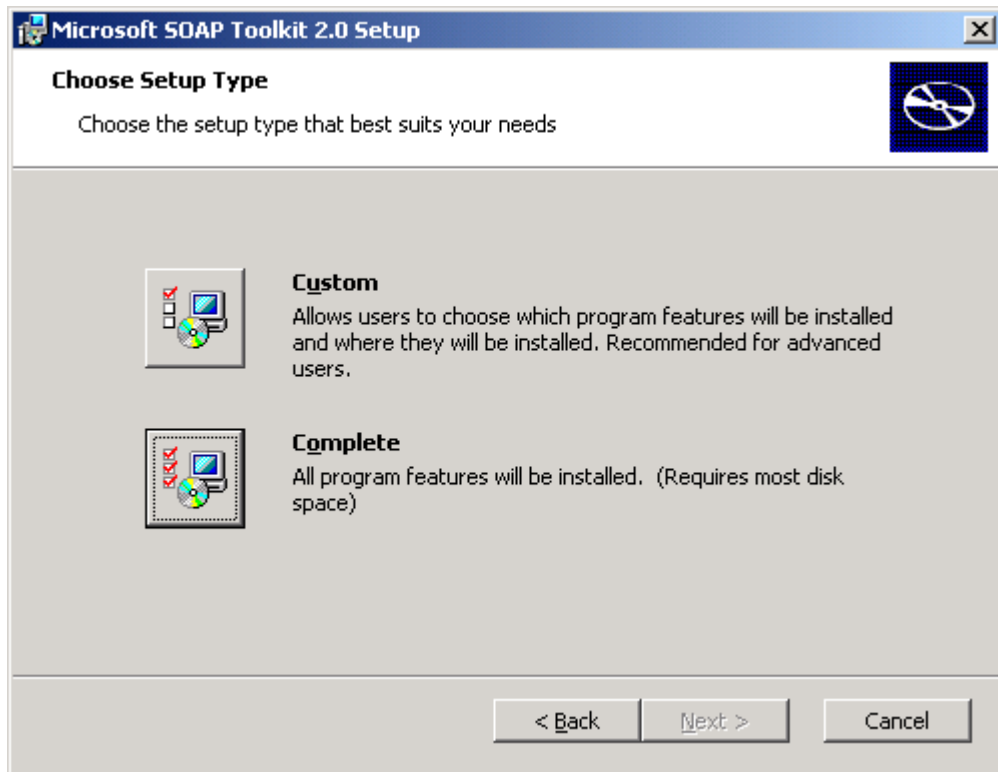
- ◆ Click "Next".



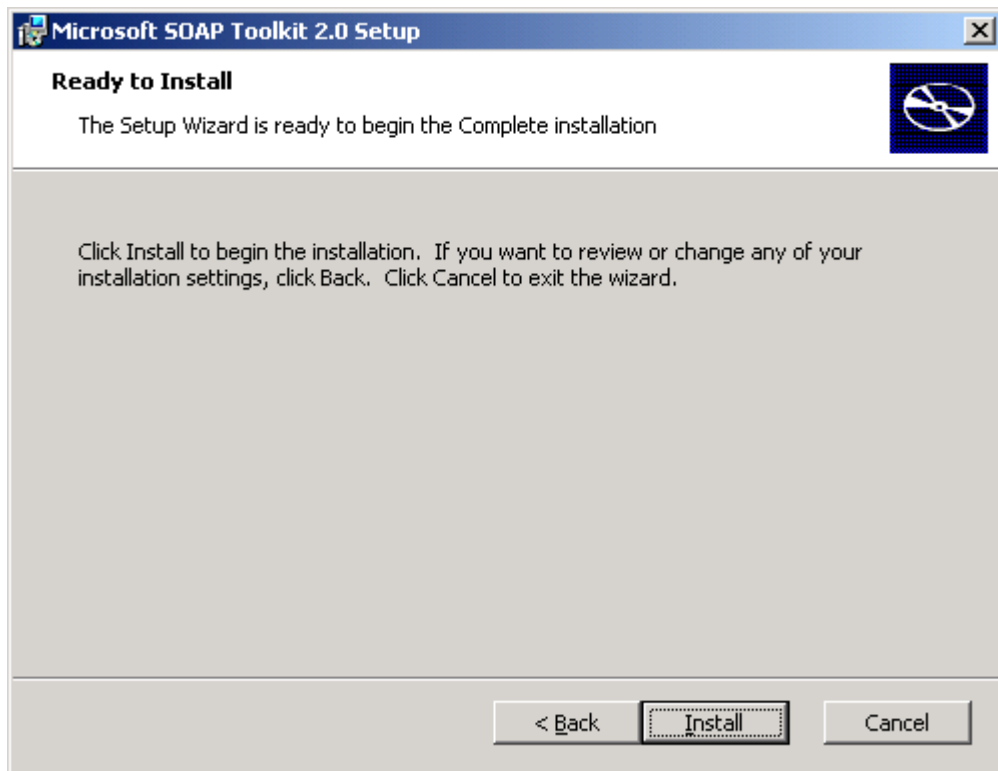
- ◆ Select "I accept the terms in the License Agreement" and click "Next".



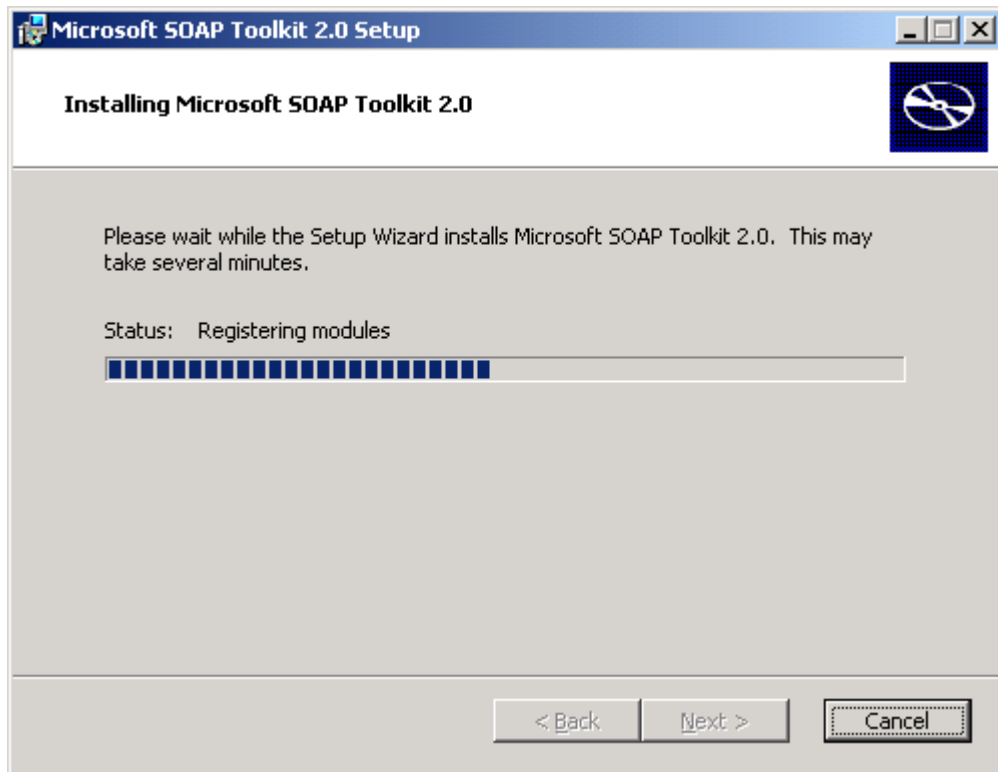
- ◆ Confirm that the user information is correct and click "Next".



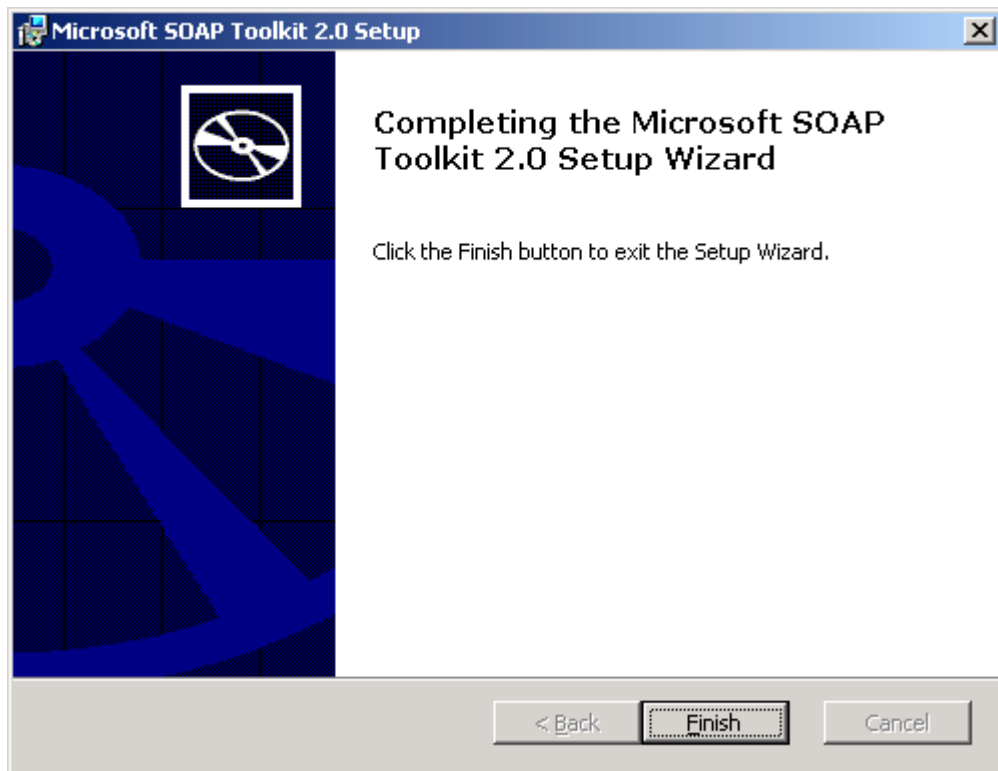
- ◆ Choose "Complete" by clicking the icon.



- ◆ Click "Install".



- ◆ Soap Toolkit 2.0 is now being installed.



- ◆ Click "Finish" to finish the installation.

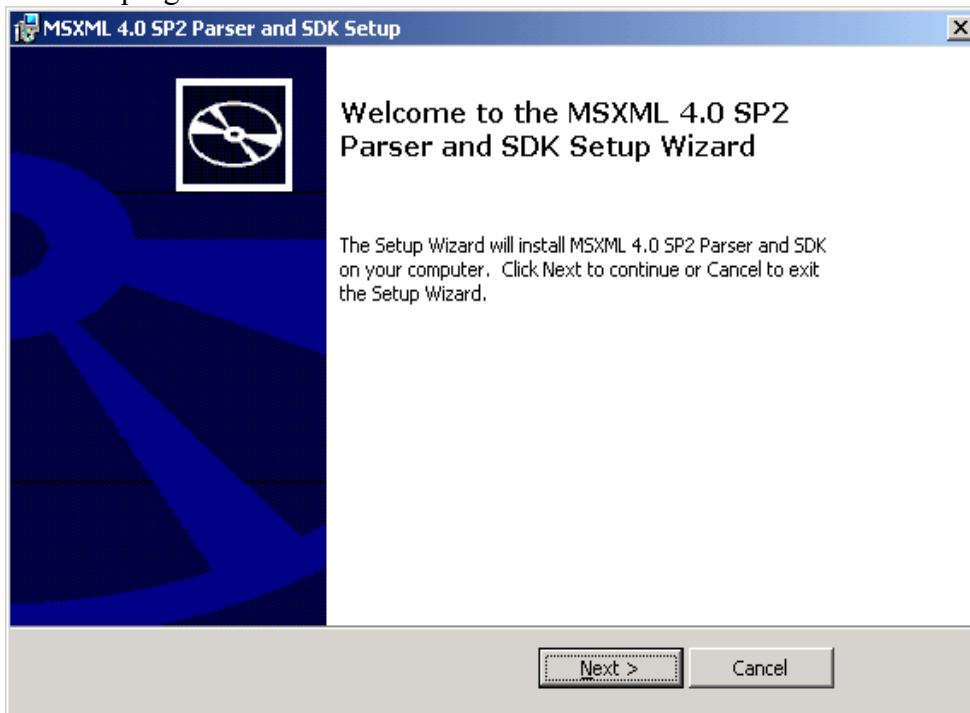
### 3. MSXML 4.0

Microsoft XML 4.0 Parser is used to interpret replies from STINA. Without this installation the spreadsheet is unable to process replies from STINA or read XML files.

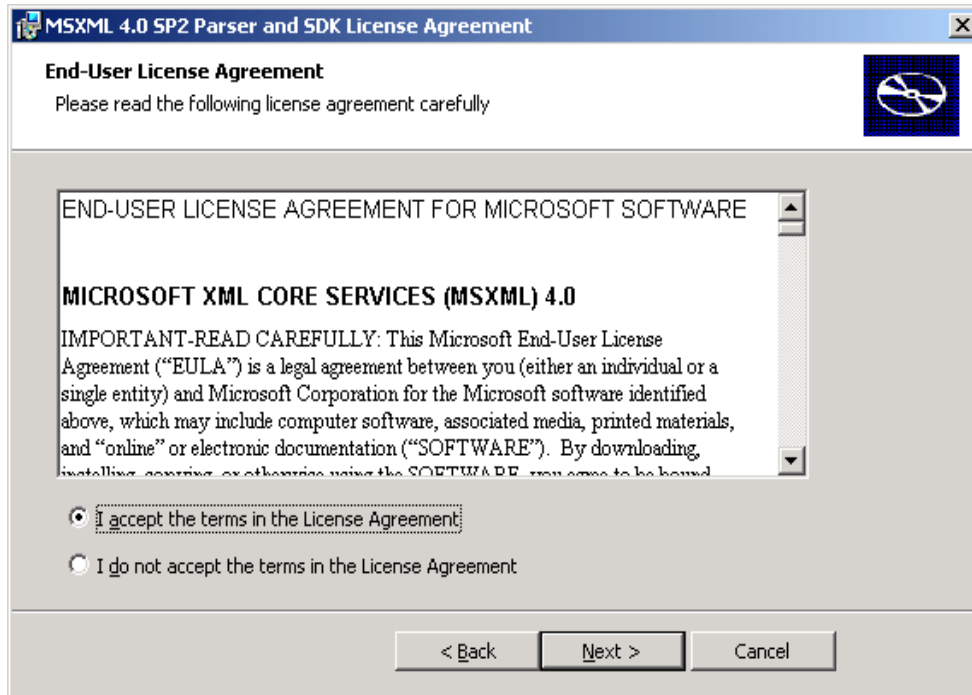
Microsoft XML 4.0 is found on the CD-ROM in the path xxx\MSXML 4.0 or can be downloaded from Danmarks Nationalbank's website [www.nationalbanken.dk](http://www.nationalbanken.dk) under Rules > Statistics – Electronic reporting (STINA) > STINA ver. 2.0.

#### Installation

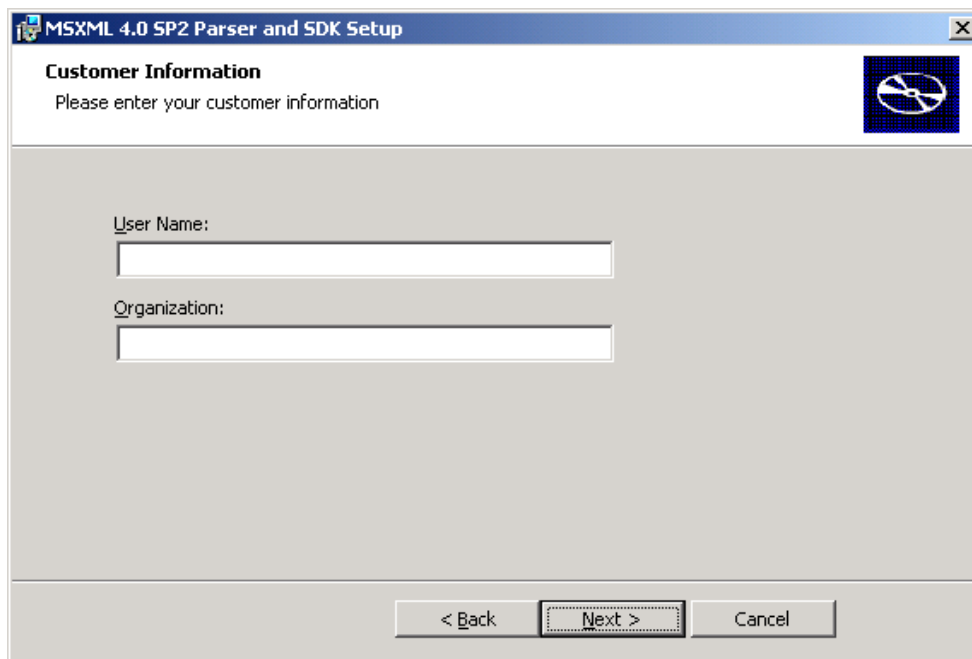
- ◆ Start the program msxml.msi from the CD-ROM as mentioned above.



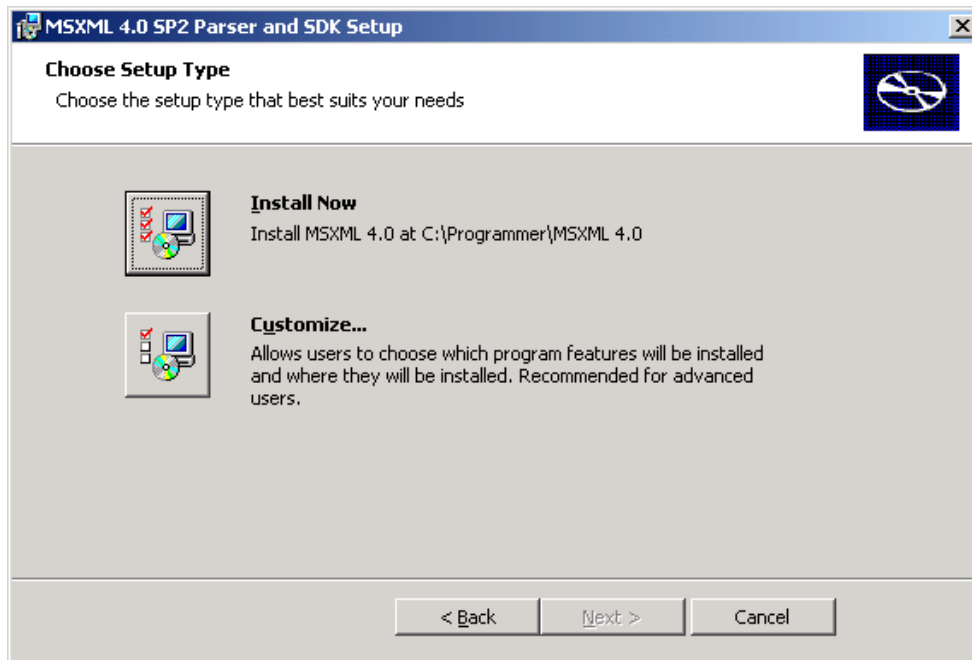
- ◆ Click "Next".



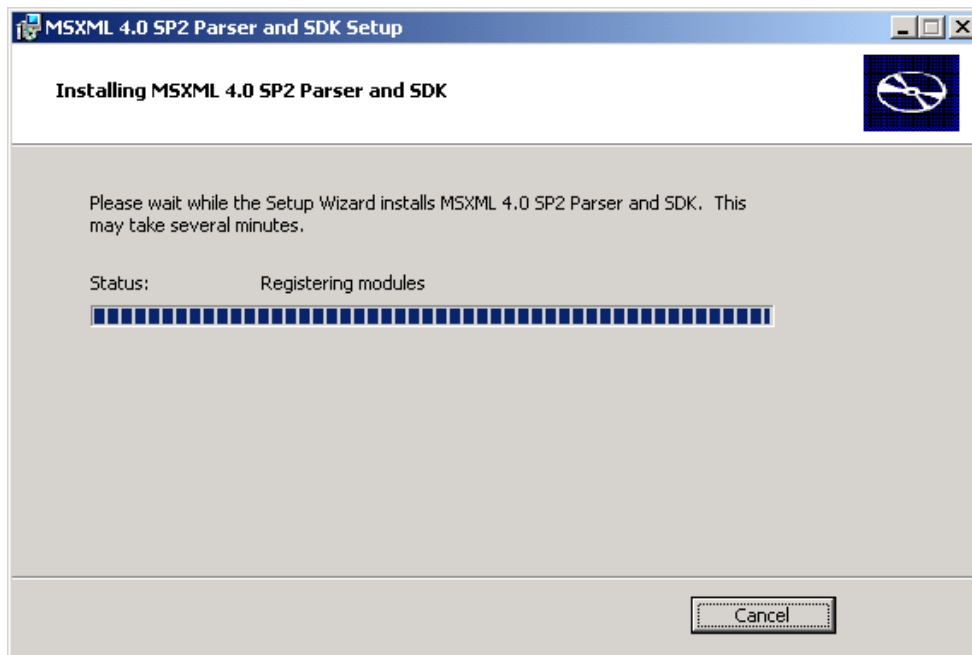
- ◆ Select "I accept the terms in the License Agreement" and click "Next".



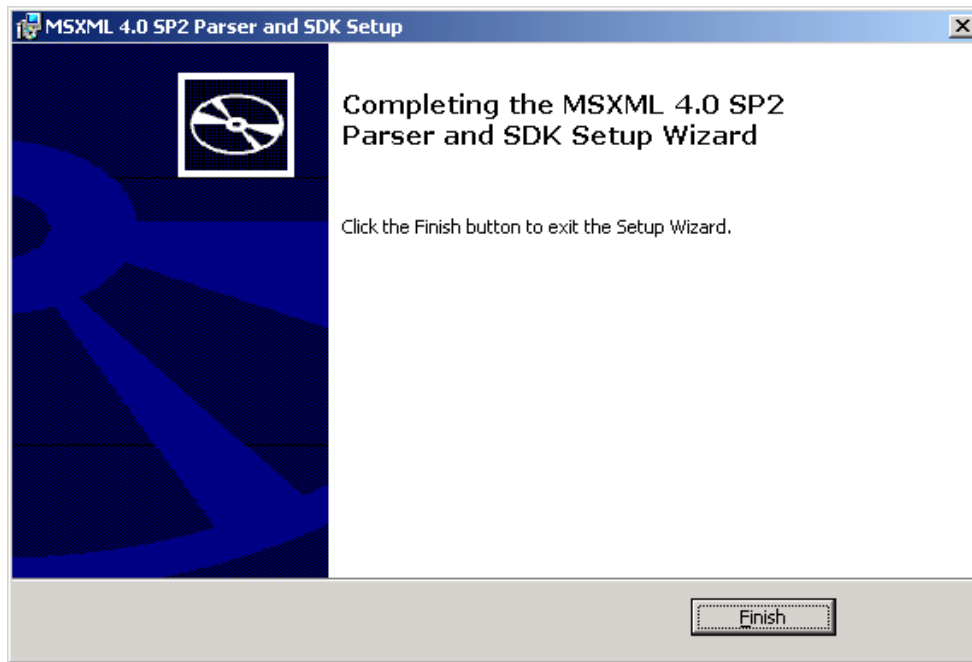
- ◆ Confirm that the user information is correct and click "Next".



- ◆ Choose "Install Now" by clicking the icon to install MSXML 4.0.



- ◆ MSXML 4.0 is now being installed.



- ◆ Click "Finish" to finish the installation.

#### 4. Windows Scripting 5.6

Windows Scripting version 5.6 is used in the spreadsheet to determine if the entries are correct. Windows Scripting is also used to read and write text files. Without Windows Scripting it is not possible to prepare a report for submission.

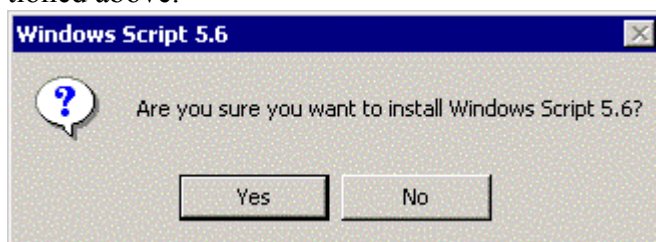
Windows Script Engine 5.6 is found on the CD-ROM in the path xxx\Scripting for Windows 4.0 for users of Windows 98, Windows 98SE and Windows ME, or can be downloaded from Danmarks Nationalbank's website [www.nationalbanken.dk](http://www.nationalbanken.dk) under Rules > Statistics – Electronic reporting (STINA) > STINA ver. 2.0.

Users of Windows 2000, Windows NT or Windows XP must use the version in the path xxx\Scripting for Windows 5.0.

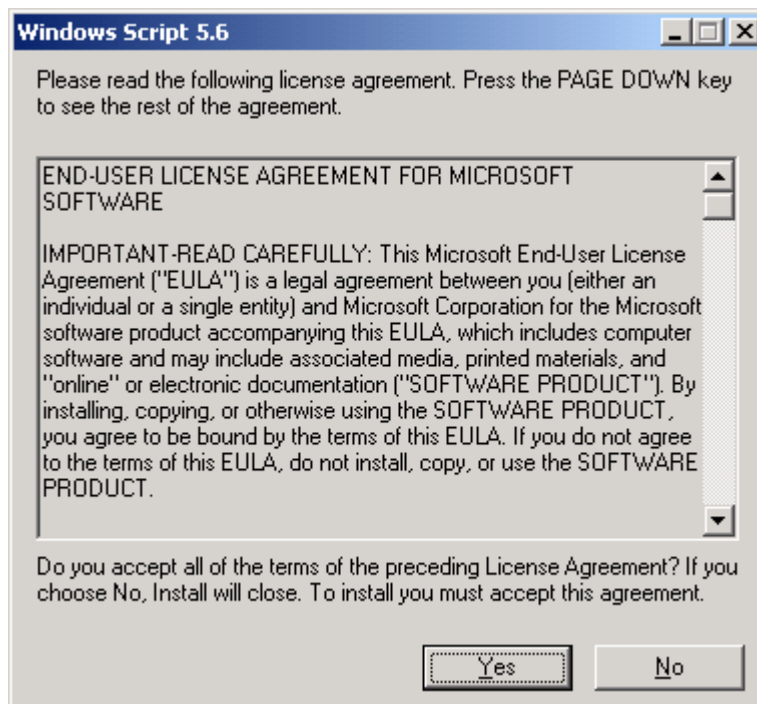
#### Installation

- ◆ For Windows 98, Windows 98SE or Windows ME, start the program scr56en.exe (Scripting for Windows 4.0) from the CD-ROM as mentioned above.

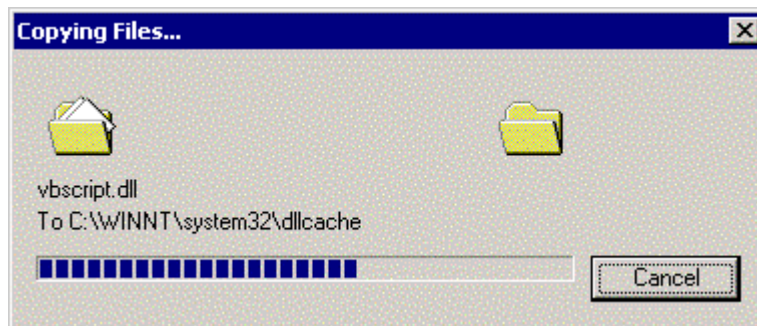
For Windows 2000, Windows NT or Windows XP, start the program scripten.exe (Scripting for Windows 5.0) from the CD-ROM as mentioned above.



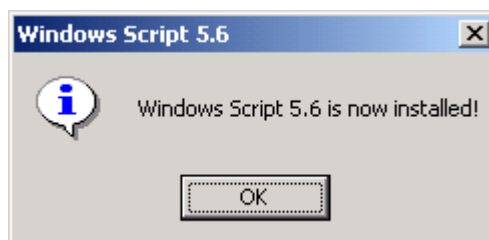
- ◆ Click "Yes" to install.



- ◆ Click "Yes".



- ◆ Windows Scripting is now being installed.



- ◆ Click "OK".
- ◆ Restart Windows.